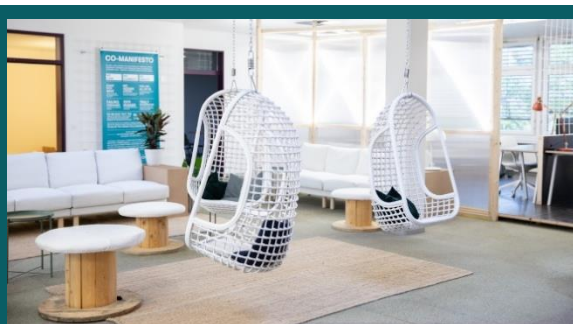


Day Passes

These Day Pass Packages allow organizations as well as individuals to offer day passes to employees, partners, friends. The main account holder receives the included Community Membership Package.

basel.impacthub.net/en/day-pass/



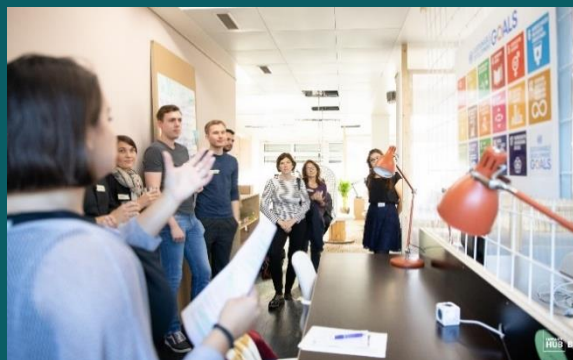
Single Day (Members)	CHF 25 / day
Single Day (Non-members)	CHF 35 / day
Day Pass Package: Small (60 Day Passes)	CHF 1'800 (CHF 30 / day)
Day Pass Package: Medium (120 Day Passes)	CHF 3'360 (CHF 28 / day)
Day Pass Package: Large (180 Day Passes)	CHF 4'500 (CHF 25 / day)

Memberships

All Swiss Impact Hub membership packages include at Impact Hub Basel the following:

- 50% discount for meeting rooms
- 20% discount for event venues
- Free filter coffee and tea
- Discounts on selected events, workshops, etc.
- Access to the other Swiss Impact Hubs

basel.impacthub.net/en/become-a-member/



Community: 0.5 Coworking Day / Month	CHF 45 / month
Starter: 5 Coworking Days / Month Add-on options: mailbox, locker etc.	CHF 135 / month
Nomad: Unlimited Coworking / Month with a flex desk 2 add-on options included 3 hours of meeting room usage per month included	CHF 395 / month
Resident: Unlimited Coworking / Month with your own fix desk 2 add-on options included 5 hours of meeting room usage per month included	CHF 550 / month

Pricelist Impact Hub Basel

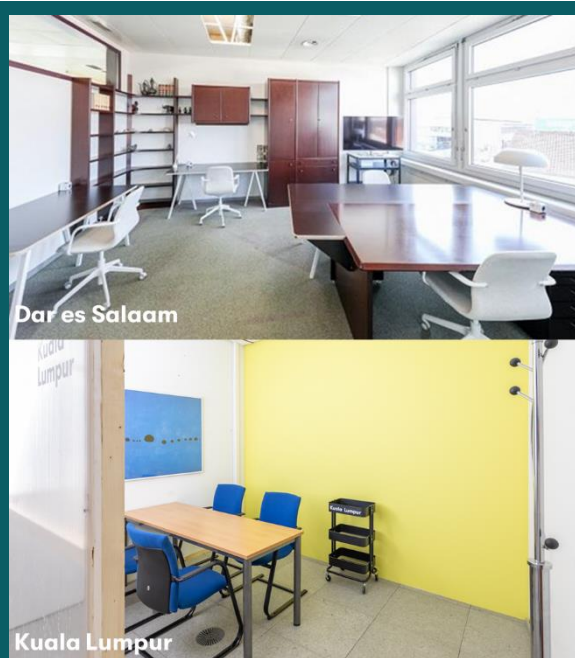
Version April 2020

Meeting Rooms

All rooms are equipped with a portable large screen that can be connected to all digital devices, writing materials such as markers, post-its, pens, whiteboard. Flipcharts can be provided on request.

All Swiss Impact Hub members receive 50% discount on meeting room bookings. Meeting rooms at Impact Hub Basel are available during opening hours 09.00-17.00. A maximum of 7 hours is charged (see price for full day booking). Photos of all meeting rooms can be viewed on the website:

basel.impacthub.net/en/meeting-rooms/



Floripa: 32.5 m ² , up to 6 people around table; up to 20 people “theatre” seating	CHF 80 / hour CHF 560.- / full day
Dakar: 32 m ² , up to 10 people around table; up to 25 “theatre” seating	CHF 70 / hour CHF 490 / full day
Managua: 30 m ² , up to 12 people around table; up to 17 “theatre” seating	CHF 70 / hour CHF 490 / full day
Medellin: 26 m ² , up to 10 people around table	CHF 60 / hour CHF 420 / full day
Dar Es Salaam: 25 m ² , up to 6 people around table; up to 8 “theatre” seating	CHF 60 / hour CHF 420 / full day
Accra: 14.5 m ² , up to 10 people around table; up to 18 “theatre” seating	CHF 40 / hour CHF 280 / full day
Bucharest: 14 m ² , up to 5 people around table	CHF 40 / hour CHF 280 / full day
Kuala Lumpur: 9 m ² , up to 4 people, open, not soundproof, next to the gallery of the Café spurlos	CHF 30 / hour CHF 210 / full day

Version April 2020

Event Venues

Photos can be viewed on the website:
<https://basel.impacthub.net/en/event-venues/>
 All Swiss Impact Hub members receive a 20% discount on event venue bookings.



Impact Factory: 136.5 m², 99 standing, 70 seats, 40 with ten tables

Wi-Fi, beamer, tech box with adapters, mobile whiteboards & pinboards, office box with pens, post-its, etc.

Available for booking in the following slots:

Morning: 08.00-12.30

Afternoon: 13.00-17.30

Evening: 18.30-23.00

Full Day: 08.00-23.00

CHF 550 / 4.5-hour slot

CHF 1'452 / full day
(12% discount)

D’Kuchi (Community Kitchen): 45 m², up to 16 people, available only after 18.00

CHF 250 / 4.5-hour slot

Catering Options

If catering is desired in addition to the event venue booking, there are the following offer options:



Morning Slot Catering Options

Welcome Coffee (including coffee & water)

CHF 4.50 / person

Welcome Coffee deluxe (including coffee, water & croissants)

CHF 7 / person

Coffee break (including coffee & water)

CHF 4.50 / person

Coffee break deluxe (including coffee, water, fruit & pastries)


CHF 8 / person

Lunch (Mediterranean, oriental catering, beverages upon consumption)

CHF 25 / person

Pricelist Impact Hub Basel

Version April 2020

Afternoon Slot Catering Options	
Lunch (Mediterranean, oriental catering, beverages upon consumption)	CHF 25 / person
Welcome Coffee (including coffee & water)	CHF 4.50 / person
Welcome Coffee deluxe (including coffee, water & cookies)	CHF 7 / person
Coffee break (including coffee & water)	CHF 4.50 / person
Coffee break deluxe (including coffee, water, fruit & pastries)	CHF 8 / person
Apéro (Mediterranean, oriental catering, beverages upon consumption)	CHF 25 / person
Evening Slot Catering Options	
Apéro (Mediterranean, oriental catering, beverages upon consumption)	CHF 25 / person
Services and Support	
Event/workshop concept and moderation/facilitation, consulting, team building/retreat organization, communication support etc.	CHF 195 / hour
Hackathons, consultations and other formats according to needs	Tailored

All prices are inclusive of 7.7% service tax (VAT).